

# Viva seta

FINITURA ARGENTATA AD EFFETTO SETA



Viva seta





Viva seta



IC 38 TONO B

# VIVA SETA

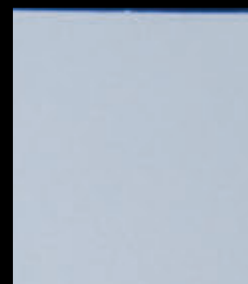
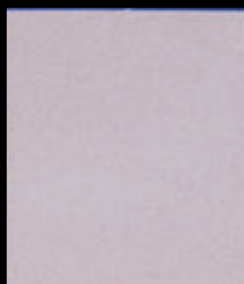
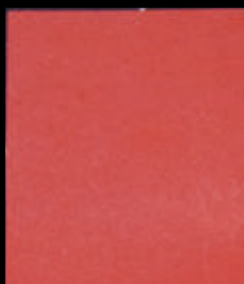
TONO A

TONO B

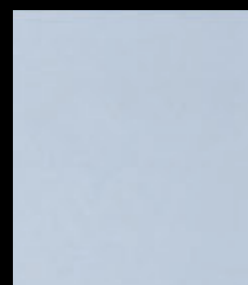
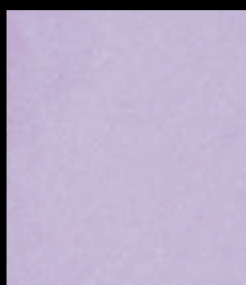
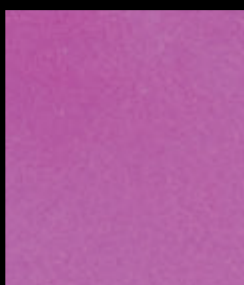
TONO C

TONO D

IC 51



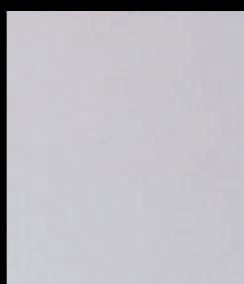
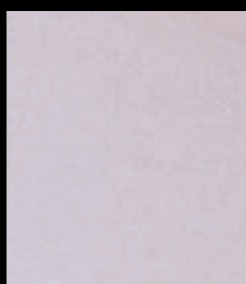
IC 50



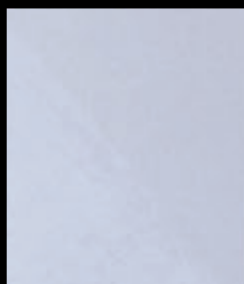
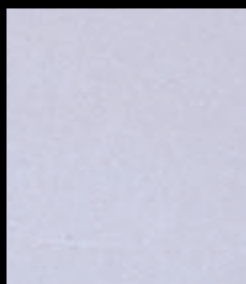
IC 49



IC 48



IC 47



THE FOLLOWING SAMPLES RESULT FROM A 2 COAT APPLICATION

# VIVA SETA

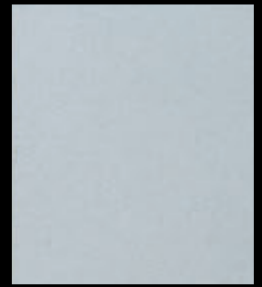
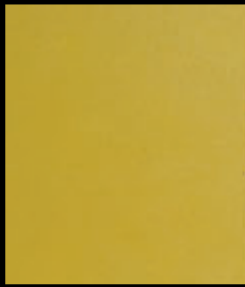
TONO A

TONO B

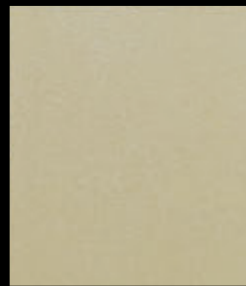
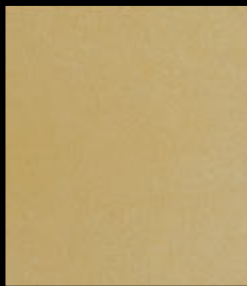
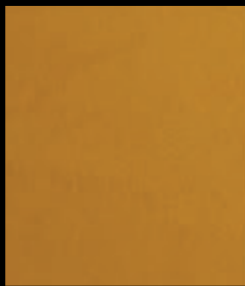
TONO C

TONO D

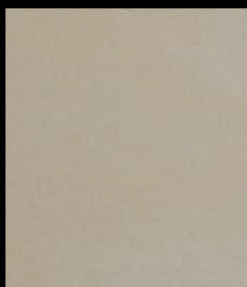
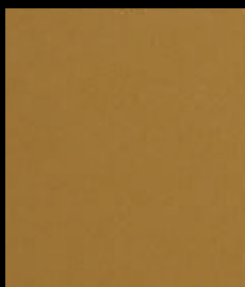
IC 42



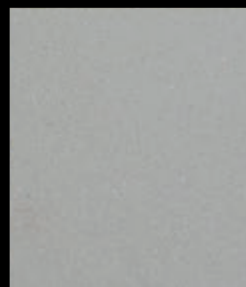
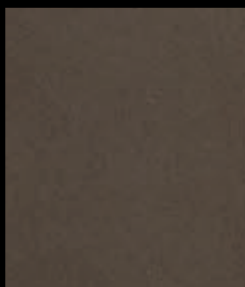
IC 46



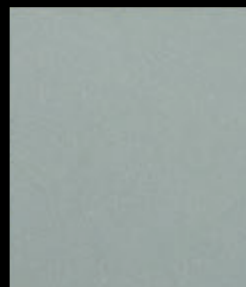
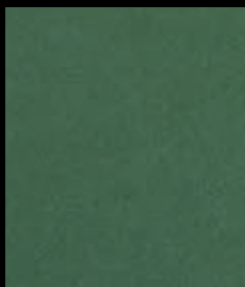
IC 45



IC 44



IC 40



# VIVA SETA

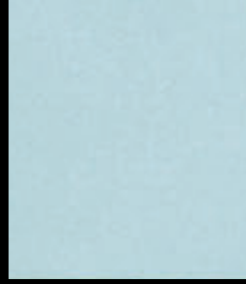
TONO A

TONO B

TONO C

TONO D

IC 41



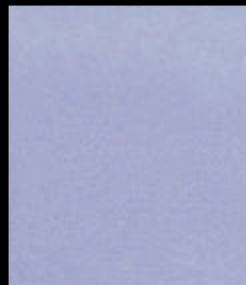
IC 39



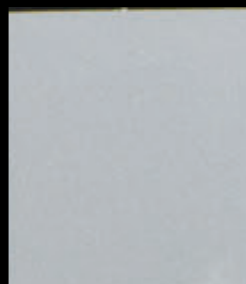
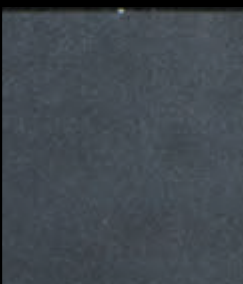
IC 38



IC 37



IC 36



M A D E I N I T A L Y



Distribuito da: